

# Notice of archaeological test pit evaluation, Radstone

October 2020 | [www.hs2.org.uk](http://www.hs2.org.uk)

## Notification



High Speed Two (HS2) is the new high-speed railway for Britain. We are continually reviewing the works on our construction sites in line with Government and Public Health England (PHE) advice on dealing with COVID-19. The Government's current strategy makes it clear that construction activity can continue as long as it complies with this guidance.

Please be assured that only sites that can operate within the guidelines are operational. All sites will remain under constant review. We have postponed all face-to-face engagement events and meetings and have put in place a number of channels to communicate with communities, such as letters and phone calls, as well as updates and alerts from each of the local community websites. You can sign up for regular updates in your local area at [www.hs2innorthants.co.uk](http://www.hs2innorthants.co.uk)

### What will we be doing?

As part of our continuing works ahead of the construction of the railway we need to undertake some further work in your area, this will consist of:

- Establishment of two small temporary site compounds with highway traffic signage
- Archaeological survey and test pits

### Set up compounds

A small compound will be set up at each archaeological site and will include track matting, security lighting and a welfare unit. Each compound will be set up away from the village and will be secured overnight with security and cordoned off with temporary fencing.

To initially establish the site, we will be using a welfare vehicle. These will be used again when we demobilise from the site. Compound locations and access roads are shown on the enclosed map.

**If you have a question about HS2 or our works, please contact our HS2 Helpdesk team on 08081 434 434 or email [hs2enquiries@hs2.org.uk](mailto:hs2enquiries@hs2.org.uk)**

### Duration of works

The works will start 2 November and continue until December 2020.

Normal working hours:

Monday to Friday 8am – 6pm.

Our contractors may also be on site for one hour's start-up and shutdown outside of these times.

### What to expect

Some additional traffic on local roads.

Some noise from the equipment used for the works.

Site operated with 24hr security and temporary flood lighting.

Site storage and welfare vehicle.

### What we will do

Manage any impacts, such as traffic and noise with the aim of reducing or removing them.

# Notice of archaeological test pit evaluation, Radstone

Notification



[www.hs2.org.uk](http://www.hs2.org.uk)

## Archaeological surveys and test pits

We will be carrying out archaeological investigations across two sites in Radstone. The purpose of this work is to further investigate two archaeological 'blank areas' in which our scanning equipment hasn't revealed significant archaeology.

We shall initially carry out surveys followed by digging a series of 50cm by 50cm square test pits. We may need to dig over 100 test pits on each site depending on the results of the surveys. The location of both sites along with works access points can be viewed on the map enclosed.

The works will be undertaken in two stages:

### Stage 1

For both sites, works will start in early November 2020 and be completed by mid-November 2020. It includes survey work which will involve 2 contractors on each site who will be using specialist equipment to perform non-invasive work.

### Stage 2

For both sites, works will start in mid-November 2020 and be completed by mid-December 2020. This will include test pit evaluation which will be excavated through a combination of a small excavator and hand digging. The land will be reinstated afterwards.

## How may this affect you?

We will be working hard to ensure any impacts on residents are kept to a minimum during these and all our future works. You may notice a little extra traffic on the road immediately around the sites with workers moving to and from the site, and occasional delivery vehicles. There may be some noise from the machinery. All machinery will be restricted to running between the hours of 8am to 6pm Monday to Friday.

No public rights of way will be closed in association with these works. All vehicles joining the highway will be cleaned to avoid mud being transferred to the road surface

To establish access to the site, existing temporary verge signage will be used. Please see the map enclosed for a diagram of the site location and access points.

For further updates about these works and HS2 in general, please visit [www.hs2innorthants.co.uk](http://www.hs2innorthants.co.uk) where you can sign up to news alerts.

Contact our HS2 Helpdesk team on **08081 434 434**

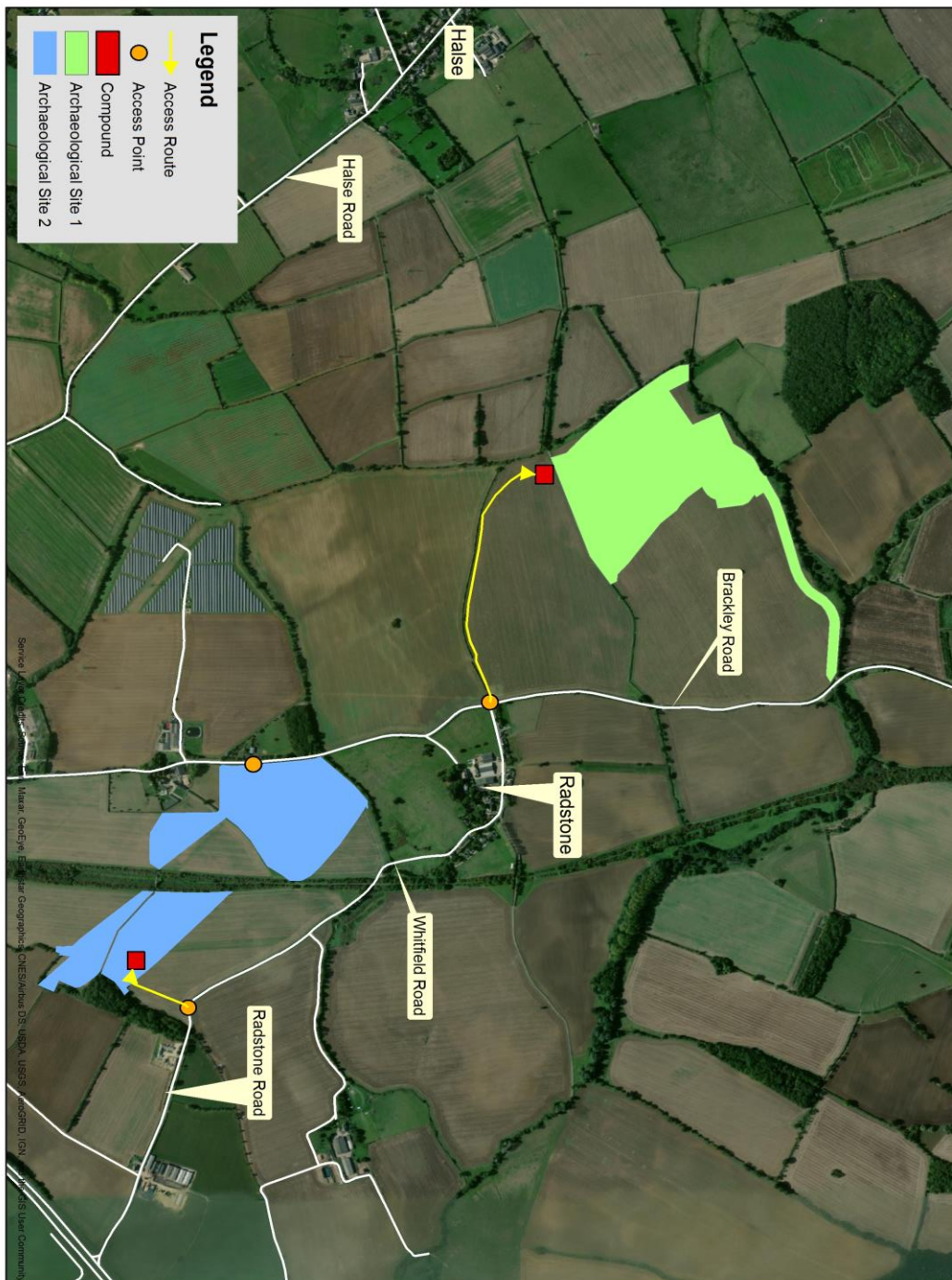
# Notice of archaeological test pit evaluation, Radstone

Notification



[www.hs2.org.uk](http://www.hs2.org.uk)

Location of test pit evaluation works and site accesses



Contact our HS2 Helpdesk team on **08081 434 434**

# Keeping you informed

We are committed to keeping you informed about work on HS2. This includes ensuring you know what to expect and when to expect it, as well as how we can help.

## Residents' Charter and Commissioner

The Residents' Charter is our promise to communicate as clearly as we possibly can with people who live along or near the HS2 route. [www.gov.uk/government/publications/hs2-residents-charter](http://www.gov.uk/government/publications/hs2-residents-charter)

We also have an independent Residents' Commissioner whose job is to make sure we keep to the promises we make in the Charter and to keep it under constant review. Find reports at: [www.gov.uk/government/collections/hs2-ltd-residents-commissioner](http://www.gov.uk/government/collections/hs2-ltd-residents-commissioner)

You can contact the Commissioner at: [residentscommissioner@hs2.org.uk](mailto:residentscommissioner@hs2.org.uk)

## Construction Commissioner

The Construction Commissioner's role is to mediate and monitor the way in which HS2 Ltd manages and responds to construction complaints. You can contact the Construction Commissioner by emailing: [complaints@hs2-cc.org.uk](mailto:complaints@hs2-cc.org.uk)

## Property and compensation

You can find out all about HS2 and properties along the line of route by visiting: [www.gov.uk/government/collections/hs2-property](http://www.gov.uk/government/collections/hs2-property)  
Find out if you're eligible for compensation at: [www.gov.uk/claim-compensation-if-affected-by-hs2](http://www.gov.uk/claim-compensation-if-affected-by-hs2)

## Holding us to account

If you are unhappy for any reason you can make a complaint by contacting our HS2 Helpdesk team. For more details on our complaints process, please visit our website: [www.hs2.org.uk/how-to-complain](http://www.hs2.org.uk/how-to-complain)

## Contact Us

Contact our HS2 Helpdesk team all day, every day of the year on:

 Freephone **08081 434 434**

 Minicom **08081 456 472**

 Email **[hs2enquiries@hs2.org.uk](mailto:hs2enquiries@hs2.org.uk)**

Write to:

**FREEPOST**

**HS2 Community Engagement**

Website **[www.hs2.org.uk](http://www.hs2.org.uk)**

To keep up to date with what is happening in your local area, visit: **[www.hs2inyourarea.co.uk](http://www.hs2inyourarea.co.uk)**

**Please contact us if you'd like a free copy of this document in large print, Braille, audio or easy read. You can also contact us for help and information in a different language.**

HS2 Ltd is committed to protecting personal information. If you wish to know more about how we use your personal information please see our Privacy Notice <https://www.gov.uk/government/publications/high-speed-two-ltd-privacy-notice>

**Reference number: FUS\_AWN\_0126 HS2-EW-FUS-Ph1-Ar-Ce-C2-AgFS-50-10/09/2020**

High Speed Two (HS2) Limited, registered in England and Wales.  
Registered office: Two Snowhill, Snow Hill Queensway, Birmingham B4 6GA.  
Company registration number: 06791686. VAT registration number: 181 4312 30.