



Notice of ecological woodland planting, south of Radstone

December 2020 | www.hs2.org.uk

High Speed Two (HS2) is the new high-speed railway for Britain. We are continually reviewing the works on our construction sites in line with Government and Public Health England (PHE) advice on dealing with COVID-19. The Government's current strategy makes it clear that construction activity can continue as long as it complies with this guidance.

Please be assured that only sites that can operate within the guidelines are operational. All sites will remain under constant review. We have postponed all face-to-face engagement events and meetings and have put in place a number of channels to communicate with communities, such as letters and phone calls, as well as updates and alerts from each of the local community websites. You can sign up for regular updates in your local area at www.hs2innorthants.co.uk

What will we be doing?

We will be undertaking ecological planting just south of Radstone. The planting will comprise of hedgerow and woodland planting as well as boundary fencing to section off the new planting area. Please see the map enclosed for more details regarding locations.

Set up compounds

The compound, which is currently being used for archaeological and fencing work in the area off Whitfield Road south of Radstone will be used for this planting works.

The compound comprises of track matting, Heras fencing, welfare compound, lighting and 24 hours a day 7 days a week security. The compound location can be seen on the enclosed map. The compound will be accessed from Whitfield Road south of Radstone, turning off the A43.

If you have a question about HS2 or our works, please contact our HS2 Helpdesk team on 08081 434 434 or email hs2enquiries@hs2.org.uk

Duration of works

The works will start 18 January and continue until Spring 2021.

Normal working hours:

Monday to Friday 8am – 6pm.

Our contractors may also be on site for one hour's start-up and shutdown outside of these times.

What to expect

Some additional traffic on local roads.

Some noise from the equipment used for the works.

Site operated with 24hr security and temporary low level flood lighting.

Site storage and welfare vehicle.

What we will do

Manage any impacts, such as traffic and noise with the aim of reducing or removing them.

Notice of ecological woodland planting, south of Radstone

Notification



www.hs2.org.uk

Mitigation planting

The mitigation planting area, once complete, will help us to achieve a net no biodiversity loss across the line of the route. The area will contain over 6600 plants covering an area of 6700m² equivalent to 0.67 hectares or 1.25 football pitches.

We are planting a native mix of hedges, trees and wild meadow species. The planting mix includes:

- Field Maple
- Black Alder
- English Oak
- Wych Elm
- Hawthorn
- Blackthorn
- Kilmarnock Willow

These species have been chosen as they are native species to the area. The size of the individual trees planted will be between 60-80cm in height. Planting at this height and in this season gives the plants the best chance of prospering in their new habitat.

How may this affect you?

We will be working hard to ensure any impacts on residents are kept to a minimum during these and all our future works. You may notice a little extra traffic on the road immediately around the sites with workers moving to and from the site, and occasional delivery vehicles. There may be some noise from the machinery which will be restricted to running between the hours of 8am to 6pm Monday to Friday.

No public rights of way will be closed in association with these works. All vehicles joining the highway will be cleaned to avoid mud being transferred to the road surface

To establish access to the site, existing temporary verge signage will be used. Please see the map enclosed for a diagram of the site location and access points.

For further updates about these works and HS2 in general, please visit www.hs2innorthants.co.uk where you can sign up to news alerts.

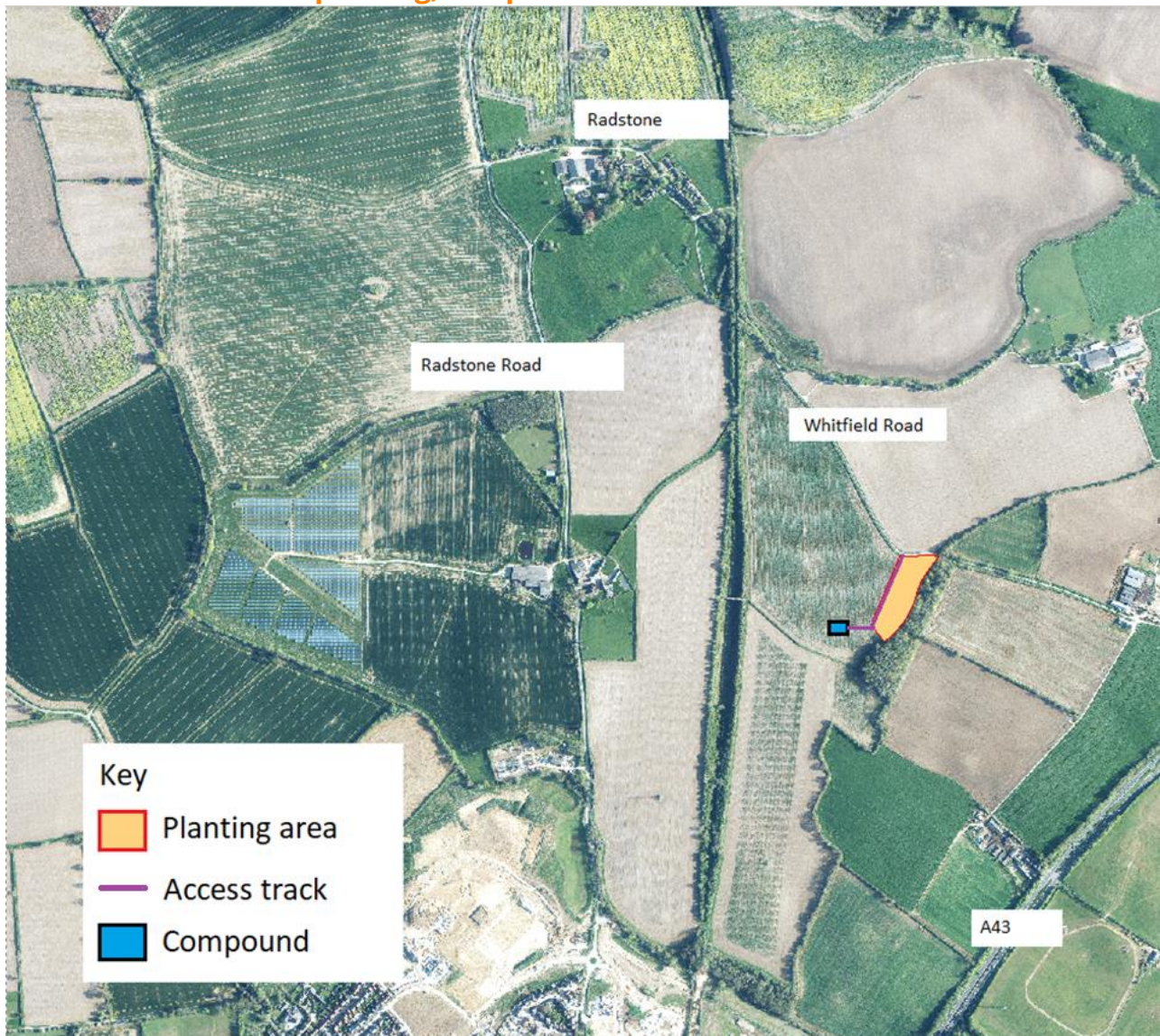
Notice of ecological woodland planting, south of Radstone

Notification



www.hs2.org.uk

Location of woodland planting, compound and access track



Contact our HS2 Helpdesk team on **08081 434 434**

Keeping you informed

We are committed to keeping you informed about work on HS2. This includes ensuring you know what to expect and when to expect it, as well as how we can help.

Residents' Charter and Commissioner

The Residents' Charter is our promise to communicate as clearly as we possibly can with people who live along or near the HS2 route. www.gov.uk/government/publications/hs2-residents-charter

We also have an independent Residents' Commissioner whose job is to make sure we keep to the promises we make in the Charter and to keep it under constant review. Find reports at: www.gov.uk/government/collections/hs2-ltd-residents-commissioner

You can contact the Commissioner at: residentscommissioner@hs2.org.uk

Construction Commissioner

The Construction Commissioner's role is to mediate and monitor the way in which HS2 Ltd manages and responds to construction complaints. You can contact the Construction Commissioner by emailing: complaints@hs2-cc.org.uk

Property and compensation

You can find out all about HS2 and properties along the line of route by visiting: www.gov.uk/government/collections/hs2-property
Find out if you're eligible for compensation at: www.gov.uk/claim-compensation-if-affected-by-hs2

Holding us to account

If you are unhappy for any reason you can make a complaint by contacting our HS2 Helpdesk team. For more details on our complaints process, please visit our website: www.hs2.org.uk/how-to-complain

Contact Us

Contact our HS2 Helpdesk team all day, every day of the year on:

 Freephone **08081 434 434**

 Minicom **08081 456 472**

 Email **hs2enquiries@hs2.org.uk**

Write to:

FREEPOST

HS2 Community Engagement

Website **www.hs2.org.uk**

To keep up to date with what is happening in your local area, visit: **www.hs2inyourarea.co.uk**

Please contact us if you'd like a free copy of this document in large print, Braille, audio or easy read. You can also contact us for help and information in a different language.

HS2 Ltd is committed to protecting personal information. If you wish to know more about how we use your personal information please see our Privacy Notice <https://www.gov.uk/government/publications/high-speed-two-ltd-privacy-notice>

Reference number: FUS_AWN_0154 HS2-EWFusion -Ph1-Ar-Ce-C2-Eco-50-01/01/2021

High Speed Two (HS2) Limited, registered in England and Wales.
Registered office: Two Snowhill, Snow Hill Queensway, Birmingham B4 6GA.
Company registration number: 06791686. VAT registration number: 181 4312 30.