

## BRACKLEY TOWN COUNCIL

20 High Street, Brackley, Northants NN13 7DS

Telephone: (01280) 702441

[www.brackleynorthants-tc.gov.uk](http://www.brackleynorthants-tc.gov.uk)

[town.clerk@brackleynorthants-tc.gov.uk](mailto:town.clerk@brackleynorthants-tc.gov.uk)

To: Cllrs Baker, Barrie, Butler, Cartmell, Kew, Sharps, Stimpson, Thompson, Tiller, Waldron and E Wiltshire

You are hereby summoned to attend a Meeting of the **Direct Responsibilities and General Purposes Committee** to be held on **Monday 15 March 2021**, following Planning & General Works Committee online via Zoom

Join Zoom Meeting

<https://zoom.us/j/96013638438?pwd=OENDNTlrYTlpVFdoZ04raEdDOGgzZz09>

Meeting ID: 960 1363 8438      Passcode: 910706

Dial by your location      +44 203 901 7895 United Kingdom

Residents are very welcome to ask questions or speak to Councillors at the start of the meeting in the usual way. Please email [town.clerk@brackleynorthants-tc.gov.uk](mailto:town.clerk@brackleynorthants-tc.gov.uk) if you require further assistance.

10 March 2021



Town Clerk

### AGENDA

#### *Members of the press and public are invited to attend*

**472/20      Apologies for absence**

Members are asked to receive and approve apologies.

**473/20      Declaration of interest**

Members are asked to declare any disclosable pecuniary interests in items on the agenda, **and the nature of that interest**, in accordance with the Localism Act 2011, and Brackley Town Council's Code of Conduct.

**474/20      Public participation**

This section of the meeting gives members of the public who are present an opportunity to speak. You may speak on any item which appears on the agenda for this evening's meeting. The session will last for a maximum of 15 minutes with any individual contribution lasting a maximum of 3 minutes. Members of the public should address their representations through the Chairman of the meeting.

**475/20      Approval of minutes**

Members are asked to receive and approve the minutes of the previous meeting of the Direct Responsibilities and General Purposes Committee held on Monday 15 February 2021

**476/20      MUGA surface replacement - attached**

The MUGA surface at the zip wire park is in need of replacement.

**RECOMMENDATION:** to agree to the works being carried out against quote 3 for a total value of £7195 plus VAT.

Please note, this is a public meeting and you may be filmed, recorded and published.  
Copies of all council papers are available to download at: [www.brackleynorthants-tc.gov.uk](http://www.brackleynorthants-tc.gov.uk)

**477/20 Planting of a tree – attached**

To consider planting an oak tree in memory of Sir Captain Tom in line with the national campaign.

**RECOMMENDATION:** to agree to the planting of a tree and associated costs as identified in the attached report.

**478/20 Matters for information or discussion**

**BRACKLEY TOWN COUNCIL**  
20 High Street, Brackley, Northants NN13 7DS  
Telephone: (01280) 702441  
[www.brackleynorthants-tc.gov.uk](http://www.brackleynorthants-tc.gov.uk)  
[town.clerk@brackleynorthants-tc.gov.uk](mailto:town.clerk@brackleynorthants-tc.gov.uk)

Minutes of the **Direct Responsibilities and General Purposes Committee** held on **Monday 15 February 2021**, via Zoom

Present: Cllrs Baker, Barrie, Butler, Cartmell, Kew, Sharps, Thompson, Tiller and E Wiltshire

Officers: Deputy Town Clerk (K Hale) and Operations Manager (M Stopps)

**426/20 Apologies for absence**

Apologies were received and accepted from Cllrs Stimpson and Waldron.

**427/20 Declaration of interest**

None

**428/20 Public participation**

None

**429/20 Approval of minutes**

On the proposition of Cllr Sharps, it was **RESOLVED** to:

approve the minutes of the previous meeting of the Direct Responsibilities and General Purposes Committee held on Monday 18 January 2021

**430/20 Splash Park**

A report was prepared for members for information.

On the proposition of Cllr Baker it was **RESOLVED** to:

Revisit this project once we have had an opportunity to discuss with developers of the new housing developments.

**431/20 Matters for information or discussion**

Information – The Town Clerk has received a message from NCC to let us know that although they are still planning to install the electric vehicle charging point in Brackley in 2021, the original deadline to complete the installations (end March 2021) has been extended to December 2021.

Meeting closed at 20:17

Signed (Chairman):

Dated:

**BRACKLEY TOWN COUNCIL**

**Direct Responsibilities and General Purposes Committee  
Monday 15 March 2021**

- Purpose of report:** To consider; replacing the "MUGA" surface
- Recommendation:** All three quotes are within £750 of each other, and are of similar spec, the one that stands out on this front is quote 3, as it includes the installation of concrete edging to the sub base, added to the inclusion of a shock pad, this will in all likelihood be the installation with the longest lifespan, and is therefore the recommended option.  
The only other obvious difference between the quotes is that one includes disposal of the old surface and spoil, however I do not feel this is especially relevant as it should only be one skip full for the surface, and we could find a use for any spoil from the old sub base with relative ease.

**Main issues and considerations:**

The multi sports surface in this park has surface damage in some areas, the sub base has become uneven, and the timber edging is beginning to rot away. After investigation with a number of suppliers, repairing the existing structure and surface is not recommended (or, in all likelihood economical in the long term). So I have engaged three companies to supply quotes to replace the surface and sub base in its entirety.

**Financial implications:**

**The Quotes**

I have tried to source quotes from local suppliers, and these are summarised below, original quote documents and all supplied supporting material are at the end of this report.

All companies have shown me samples of the surface they would recommend, and these were of comparable depth, spec and objective quality (all came with warranties)

**Quote 1 – Elite artificial grass £6760 + VAT**

Northampton Agent for a national company, recently replaced pitches at training facility for Liverpool football club. Quote does not include disposal of old surface or sub base

**Quote 2 – Easigrass £7500 + VAT**

Local Landscape and play surface contractor, does a lot of work in community and education sectors. Quote Does include disposal of all waste

**Quote 3 – Total play surfaces £7195+ VAT**

Local sports surface specialists. Company is ECB accredited and does a lot of work on cricket pitches etc. Quote does not include disposal of old surface or sub base

**Staffing implications:**

Managing of the project.

**Other implications:**

None perceived unless a quote is chosen which does not include disposal of waste.

**Background papers:**

Full quotes attached .

**Author**

Mark Stopps  
Operations Manager



0800 8511 721

hello@eliteartificialgrass.co.uk

6 The Range Loughborough LE15 7EB



Dear Chris

Many thanks for taking the time to meet with me and allowing me to quote for your artificial grass installation.

Your quote for the supply and installation of 104 sqm of sports surface, type to be advised, is as follows:

Excavate and dispose of existing soil and turf.  
Picture frame the area using 40mm x 40mm pressure treated batons, secure into ground using stakes made of the same material.  
Adjust to level and set at height relevant to pile length of artificial grass to be installed (38mm).  
Install porous membrane (geotec) to stop weed growth and allow for moisture to pass through and into the water table.  
Install a hardcore layer of either type 1 mot or granite dust whichever is available and compact.  
Install a drainage layer of sharp sand and compact to level height with batons.  
Install approximately 104 sqm sports surface (type to be advised) cut to fit and secure to batons using 14mm galvanised staples.  
Joint where required using bonding technique.

#### Artificial grass

Unlike most artificial grass companies all of our artificial grass is manufactured in Europe we do not buy artificial grass from any other part of the world. It is of the highest quality and is designed to be installed outdoors in the UK. Unlike lots it is not for trade shows only. The backing is UV stabilised which prevents excessive heat transfer during summer months. It is pet treated to prevent staining and also UV treated to prevent fading. The product comes with a 10-year manufacturer warranty we also give a 10-year installation guarantee on the workmanship.

Total Cost: £6,760 plus VAT.

Kind regards

Mike Rodgers





Chris Hindson  
Bradley TC Buildings  
Open recreational Area

### Quote

Thank you for getting in touch with Easigrass and giving us the opportunity to provide you with an Easigrass quote.

### Health & Safety

- Complete area will be enclosed with arris security fencing
- Security Signs installed with our contact number for any questions

Holland Park Recreation Easigrass – Spec sheet included within email.

### Work to be carried out:

- Remove old artificial grass and base down to 60mm deep
- Supply & Install MOT sub-base stone
- Compact MOT stone
- Supply & install sharp sand to blind the base
- Supply & install 6mm granite dust
- Compact Granite dust
- Supply & install Holland Park grass
- Heavy layer of kiln dried sand which helps for any fires on the grass
- Dispose of all waste
- Tidy any mess created by us

Total cost - £7500.00 + Vat

### Key Features of Holland Park Recreational Grass

- \* 30mm Pile
- \* Stem Grass Technology
- \* Bi-colour Grass
- \* Ultimate hard-wearing product
- \* Designed for Heavy footfall
- \* Ideal for commercial applications
- \* One of our most durable products



01604 510000  
www.easigrass.com  
Easigrass is a registered trademark of Easigrass Ltd

Easigrass Ltd  
Easigrass - the grass that's always green  
Tel: 01604 510000



If you would like to discuss further or proceed with the order, then please do not hesitate to contact us and we will arrange the next steps.

Kind Regards,

Ray Wheeler  
Easigrass  
01604 556789  
07941431504





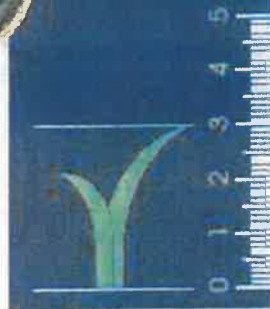
# easigrass™



## Holland Park



30mm ±10%  
pile height



### Easigrass Product Rating:

Durability	★★★★★
Luxury feel	★★★★
Natural look	★★★★
Pet suitability	★★★★★
Pile thickness	★★★★★

### Technical Product Specification:

<b>Yarn</b>	<b>Colour</b>	<b>Backing</b>
Type: Multifilament M6	2 Tons Green	Type: Reinforced triple backing
Material: 100% Polyethylene	2 Tons Brown Thatch	Material: Latex Rubber
<b>Product</b>	<b>Total Weight</b>	<b>Water Permeability</b>
Pile Height: 30mm ±10%	2,000 gm <sup>2</sup> ±15%	60 litres per m <sup>2</sup> per minute
Gauge: 3/8 inch		

### Key Product Features

- ✔ Stem grass technology
- ✔ Bi-colour grass
- ✔ Ultimate hard-wearing product
- ✔ Designed for heavy footfall
- ✔ Ideal for commercial applications
- ✔ One of our most durable products



spot activity



child friendly



proven performance



high resilience

### Product Warranty & Peace of Mind Guarantee

- Increased UV protection from fading
- British designed & built to last
- 15 year Easigrass trading history



easigrass.com  
follow us





# MUGA AREA - New Playing Surface

Prepared for: Mr Chris Hindson

Prepared by: David Bates, Managing Director

Date: 3 March 2021

Project Number: BRCKLMUGAV1



**GROUNDS  
MANAGEMENT  
ASSOCIATION**



ISO  
14001 : 2004  
CERTIFIED



ISO  
9001 : 2008  
CERTIFIED

## INTRODUCTION TO TOTAL-PLAY

### CONCEPTONE

Total-Play (TP) was founded by David Bates, former Head Groundsman at Northamptonshire County Cricket Club and Chairman of the First Class Grounds Committee. David utilised his practical and technical knowledge to design a non-turf surface suitable for both grass roots and high performance cricket. This system was subsequently branded as 'p396' to reflect both the full width carpet and the ability to use the system all year round.

### OUR PHILOSOPHY:

TP has three core selling points, these are:

- Highest quality components
- Long lasting warranties on concrete, netting, stonework and base construction
- Total quality control - achieved by having in-house staff using company owned plant

### QUALITY ASSURED:

- TP was the first contractor to achieve the coveted ECB Code of Practice for non-turf installations and is proud to continually be accredited under the kite mark for both quality and performance.
- TP installations are designed to meet and often exceed England's Water Careful Board technical guidelines and water Performance Quality Standards (PQS).
- TP has achieved ISO 9001 and 14001 accredited status and actively participate in the CRMS scheme, recently achieving 'Accredited' status, further endorsing our commitment and compliance with important aspects of Health & Safety law.

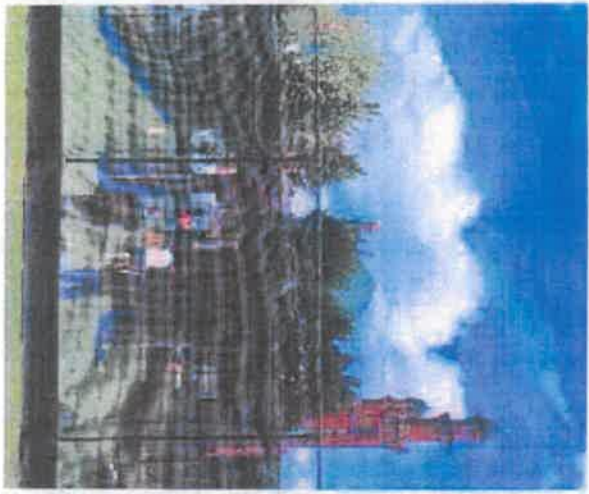
These accreditations reinforce TP's credibility and offers additional assurance to all clients that attention to detail and correct procedure are highly regarded by our entire team.





## OUR ECB APPROVED SYSTEMS

We strive to constantly innovate and drive the synthetic market forward. We now have a range of six ECB Approved Systems. Our '1930s', '1961' and '1981' systems, can now be installed in a 'Natural Pitch Colour' 'NPC' playing surface carpets. Giving our clients varying colour options in both a woven and knitted carpets. Our range of carpets also incorporates a navy blue yarn for statures and banking areas. No other supplier offers such a bespoke range of systems and design options. We believe all our ECB approved systems are of a unique, modern design offering a balanced game between bat and ball and are proven to stand up to the rigours of modern usage for a wide range of clients and environments.



## Site Investigation Report

To gain a full understanding of client requirements and an appreciation of the conditions on site, a visit was conducted Tuesday, 19 February 2021 by David Bates.

The existing installation is 18m by 7.8m general multi-use games area which also includes football goal

1. The playing surface consists of a 'needle punct' light green carpet with no shock pad.
2. The system is edged with timber boarding, which shows sign of rotting.
3. The base construction is a clean single size gravel (30mm) placed on to the indigenous soil formation to an approx depth of 100-120mm



# Project Specifications

## PROPOSED DESIGN ELEMENTS OF NEW MUGA AREA:

The proposed upgraded design would remove the existing carpet and timber edging. The existing stone base would be levelled and compact PLUS secured with a precasted concrete kerb edges laid in place with a concrete haunching. The existing base would be levelled, utilising a performance specialist dynamic porous aggregate layer and compacted. The playing surface would then be fitted with a performance shock pad and a sand filled filled MUGA carpet.

## SYSTEM DIMENSIONS:

1. 18m long
2. 8m wide

## 1. PRELIMINARIES

1. Set up site compound, access road, welfare facilities & mobilisation of plant

## 2. CONSTRUCTION WORKS

1. Site clearance: Removal of existing carpet and timber edging
2. Trim/Level Existing Base
3. Edge Specification - To increase the longevity of the installation, a concrete kerb perimeter edge is included in the construction. The supports and anchors the aggregate profile and prevents structural degradation at the surface edge.
4. Installation of a Dynamic Porous Aggregate Base Layer: TP playing surface carpets are laid onto dynamic porous aggregate performance base. The system is constructed with NO internal frameworks within the playing area. The performance base is constructed as one block using laser guided machinery to provide a top and edge free playing area. A unique design which ensure consistency, stability and longevity for a practice facility. The system DOES NOT use materials that degrade. Following a site investigation and considering on site conditions and the size of the facility the natural depth of the dynamic porous aggregate base profile will be: 60-80 mm.

### **3. PLAYING SURFACE**

1. The supply and installation of a fully capped MUSA playing surface for all sports
2. 100' premium grade listed carpet of a single tone green colour 18mm pile height
3. 100' load absorbing shock pad

### **4. SPOIL**

1. Spoil will be left on site for its count to remove - no cost have been included to remove waste material from site

### **5. REINSTATEMENT OF BUILD SITE**

1. Option One: No soil will be generated to repair or grade up the system and therefore a cost of 10 tons of a reworked soil can be obtained.
2. Option Two: Any material good is completed by the client.

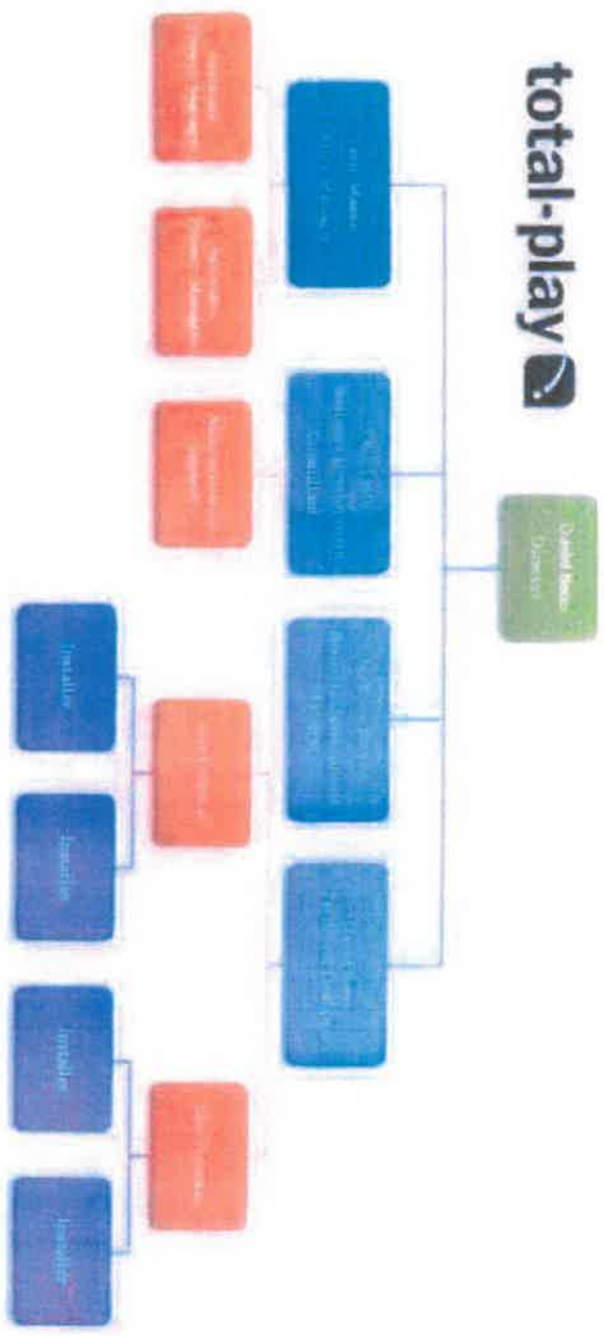
**PROJECT COST**

Spec. Part	Description	Cost
<b>MUGA SYSTEM</b> 13m by 8m = 104 m2 - 42 m		
<b>1</b>	<b>Preparations</b>	
1.1	Site Compound, Welfare, Fencing	£1120
1.2	Welfare Facilities	FOO
1.3	Mobilisation	£480
<b>2</b>	<b>Construction Works</b>	
2.1	Site Clearance	£1180
2.2	Trim formation	£350
2.3	Edge stabilisation	£1,280
2.4	Dynamic Porous Aggregate Base - Level & Compact	£1,680
<b>3</b>	<b>Playing Surface</b>	
3.2	105 MUGA Turf Carpet - Single Tone Green	£2,012
3.3	103 Shock Pad	£303
<b>SUB TOTAL EXCL VAT</b>		<b>£7,195</b>
<b>VAT @ 20%</b>		<b>£1,439</b>
<b>PROJECT TOTAL</b>		<b>£8,634</b>





TP MANAGEMENT STRUCTURE





**CONTACT DETAILS**

**DAVID BATES**

total-play Ltd  
Quinton Green Park  
Quinton Green  
Northampton  
NN7 2EG  
Tel: 01804 864676  
Mobile: 07709 449801  
Email: [db@total-play.co.uk](mailto:db@total-play.co.uk)

**CONFIDENTIALITY**

This document is provided in confidence to Chris Henson. No part of it may be reproduced or communicated to any other party without permission of total-play Ltd

**BRACKLEY TOWN COUNCIL**

**Direct Responsibilities and General Purposes Committee  
Monday 15 March 2021**

**Purpose of report:** To consider; planting an Oak tree in memory of Sir Captain Tom

**Recommendation:** To accept the new contract

**Main issues and considerations:**

There has been a campaign to plant trees in communities to mark the achievements of Sir Captain Tom .

It was thought it might be good to do this and perhaps Poppy Fields Park might be a fitting place for this.

With an Oak being a typical long lasting English tree this perhaps is the right choice?

Perhaps a good sized tree of 12-14ft with a small plaque to commemorate the achievement.

**Financial implications:**

Total £170

**Staffing implications:**

Small amount of time to plant the tree.

**Other implications:**

None perceived

**Author**

Mark Stopps  
Operations Manager